

Hexstravaganza Supply List

4 hour class. Difficulty 2 Stars. This class is an introduction into making the Star 60, which can be made in 17 sizes. As with all the Star 60 Stars they can be incorporated into OBW's. We will be making 3" finished units for 6" finished stars. You may choose to make this wall hanging or make stars to fit into your OBW by following the fabric chart in the Star 60 tool instructions .

Fabric Requirements : Color 1 and 2 for the Diamonds should be contrasting fabrics, or they can be the same. You can also go scrappy. The setting/framing fabric can be a fun multicolored print that goes with your color 1 and 2.

Color	Yardage	Unit	Cutting
Color 1	1/4	18 Diamonds	Cut (2) 2 ¼" x WOF strips
	1/8	9 Precision Companion Triangles	Cut (1) 3.5" x WOF strip
Color 2	1/4	18 Diamonds	Cut (2) 2 ¼" x WOF strips.
	1/8	9 Precision Companion Triangles	Cut (1) 3.5" x WOF strip
Color 3	3/8	72 Side Triangles	Cut (4) 2 ½" x WOF strips
Color 4	3/8	Half Rectangle Triangles & Framing	Cut (1) 6 ½" x WOF strip – sub-cut (2) 6 ½" x 10" rectangles. Cut 1 – 2" WOF strip, Cut 1 - 3" WOF strip
Color 5 Optional	3/4	Outer Border & Binding	Cut 4 – 3" WOF Strips for outer border. Cut 3 – 2.25 WOF strips for binding

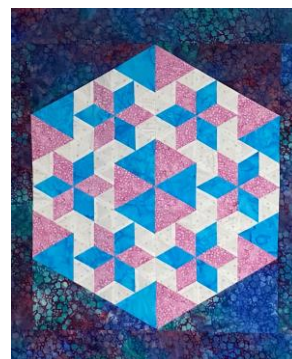
Studio 180 Design Supply List:

Star 60 Tool

Basic Supplies:

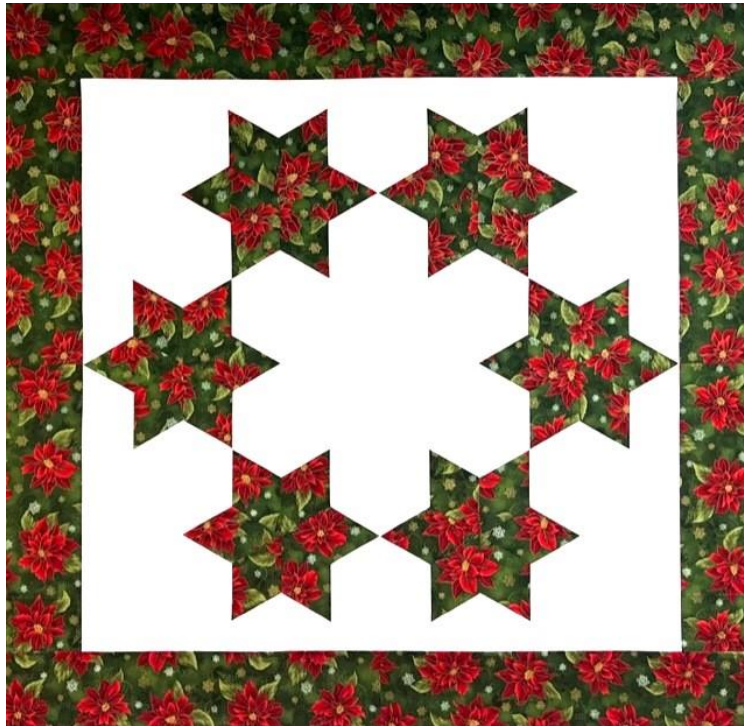
Cutting mat,
rotary cutter with a new blade,
sewing machine in good working order,
6" x 24" & 6" x 12" ruler
scissors, thread, pins, pen
Invisi-Grip: Recommended to help tool
from sliding while cutting and Required
for Checkerboard 60 & Framed 60
classes.

Tip: If you want your units to look like they are floating, make side triangles and setting/frames from the same fabric.



Measures 22' x 26.5"

Bonus – Yardage for making 18” Star 60 Units



This version of Hexstravaganza measures 66” x 66”. It is made using 9” finished units for 18” finished Star 60’s and a 7” finished border.

Fabric Requirements:

Color 1 Diamonds: 1 ½ yards

- Cut 36 Diamonds from 9 - 5 ¼” WOF strips. See Star 60 Instructions, page 2, Steps 1 – 2.

Color 2 Background: 2 ½ yards

- **Side Triangles**, cut 9 – 5 ½” WOF. Sub cut 36 sets of 2. See Star 60 Instructions, page 3, Steps 3 – 5.
- **Half Hexies**, cut 3 - 9 1/2” WOF strips, sub cut 6 - 6 ½” x 10” rectangles, sub cut 6 half hexies. See Star 60 Instructions, page 10. Half Hexies over 4 ½” will be covered in class.
- **Half Triangle Rectangles** - cut 2 – 6 ½” WOF, sub cut 6 - mirror image sets. See Star 60 Instructions, page 11, Steps 35 -37.

Border & Binding 2 yards